



 www.ixxiyourworld.com/demo

IXXI is not suitable for children under 4 years of age

Your tools

inclusive



Cards



I-connectors



X-connectors



Monos



tesa Powerstrips*



Pushpins



Click tool



Hanging tool

needed



Tape



Level



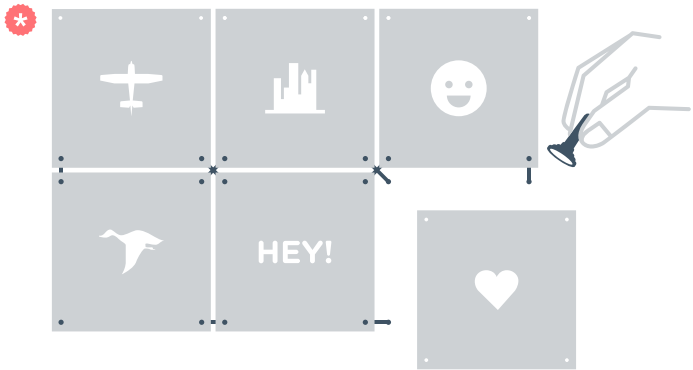
Please note: Powerstrips will only stick to a smooth, clean surface.
For alternative hanging methods, check www.ixxiyourworld.com/hanging



When removing the Powerstrips, please be careful (see page 11).
Tip: Click the tag with the removal instruction as a reminder onto a Mono (underneath a card)

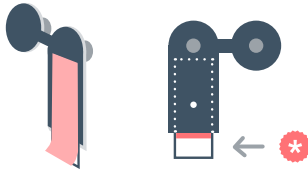
Step 1

- EN** Watch the demo video in English - www.ixxiyourworld.com/en/demo
- NL** Bekijk de Nederlandse demo video - www.ixxiyourworld.com/nl/demo
- DE** Schau dir das deutsche Demo-video an - www.ixxiyourworld.com/de/demo
- FR** Regardez notre vidéo démo en français - www.ixxiyourworld.com/fr/demo

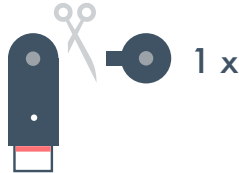


- A** Lay out the numbered cards in order, according to the provided preview with the image facing upward. Connect the cards using X- and I-connectors. Use the click tool to prevent any damage.
- *** Leave the top row empty, this will be attached to the Monos at a later stage (step 5).

Step 2

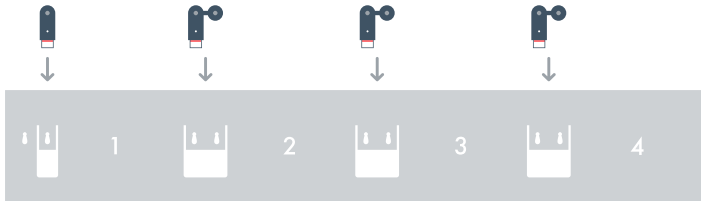


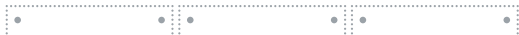
- A** Attach a Powerstrip to the back of each Mono.
- *** Make sure that the Powerstrip's plastic tab with the red stripe ends up sticking out from under the Mono. Do not remove the protective cover on the back just yet.



- B** Cut a Mono in half. This Mono will be used in the next step.

Step 3

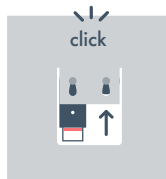


 *example: 3 cards + 1 = 4 Monos

- A** Now you are going to fill the hanging tool with Monos.
(The right amount = the number of cards in width + 1 *)

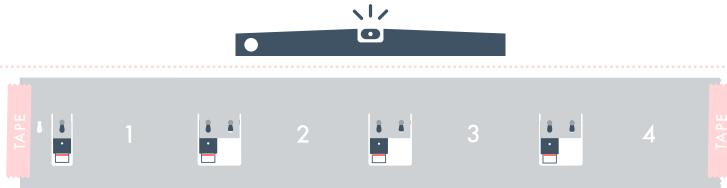
>120 cm

If your IXXI is wider than 120cm? Then fill up the entire hanging tool with Monos, follow the steps and after finishing step 4, go to step 4+. There you will use the remaining Monos.

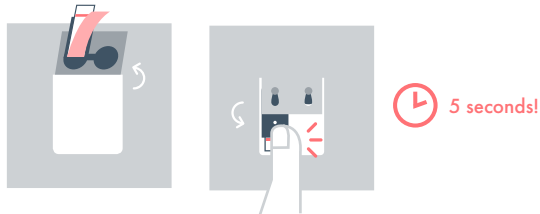


- B**
- Lay out the hanging tool with the top facing upwards.
 - Place the Monos with the Powerstrip towards the back underneath the hatches.
 - Use the clipped Mono from step 2 for the hatch on the far left.
 - Slide the Monos upward into the slots until they click in place.

Step 4



- A** Attach the filled hanging tool at the desired height on the wall.
- Use tape on either side of the hanging tool.
 - Make sure it is flat and levelled against the wall.

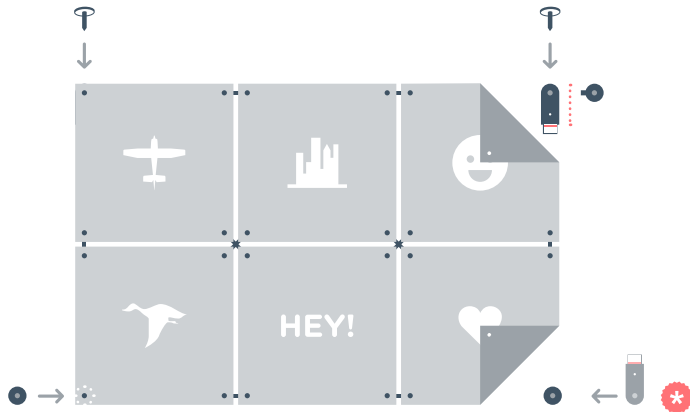


- B** - Now fold the hatches up, one by one.
- Remove the protective slips from the Powerstrips.
 - Fold the hatches down again and press the Powerstrips to the wall during 5 seconds.
- C** Remove the hanging tool by carefully sliding it off the Monos.

120 Is your IXXI wider than 120 cms? Then continue with step 4+ on page 8.

Step 5

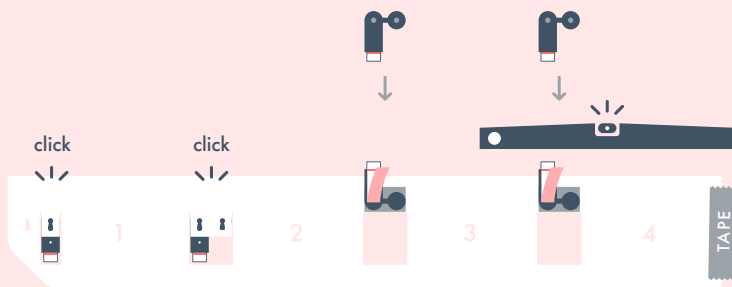
- A** Fasten the first and last Mono with a pushpin, and optionally add an extra one right in the middle.



- B** Click your IXXI onto the Monos.
- C**
- Break or cut the last Mono (at the far right) in half.
 - The two round Mono parts that remain can be clicked onto the bottom right and left corners.

***** Tip: As an extra reinforcement, you could use two long Mono parts upside down instead and attach these to the wall with Powerstrips.

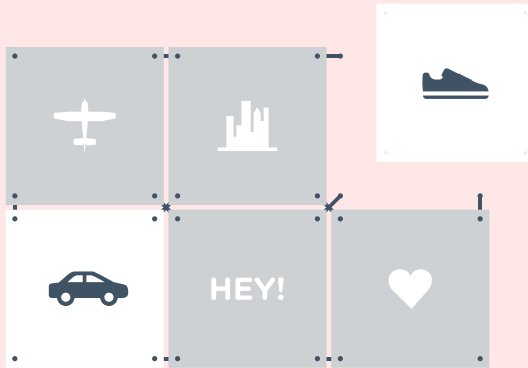
Step 4+ IXXIs longer than 120 cm



You have completed steps 1 through 4 of this manual. With the following steps, you can add extra width.

- A** - Slide *the first two hatches* of the hanging tool over the last two Monos on the wall.
 - Position the hanging tool whilst hanging from this point, attach it to the wall with tape and make sure it is levelled.
- B** - Fill the hanging tool with the additional Monos you need.
 - From this point, you can continue following the instructions, from steps 4B and 5.

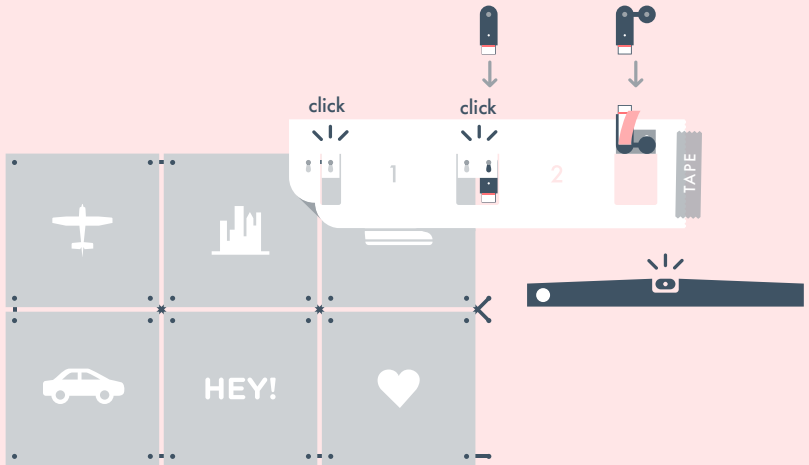
Refill Change cards



When you place a repeat order, you can easily add new cards onto your IXXI. Cards and tools are easily removed without damage. Remove a card by lifting up a corner of the card and by pushing the connector head out. With the click tool you can attach new cards and connectors so your IXXI is once more up to date. On page 10 you can see how to expand your IXXI.

New cards are easily ordered online at: www.ixxiyourworld.com/refill

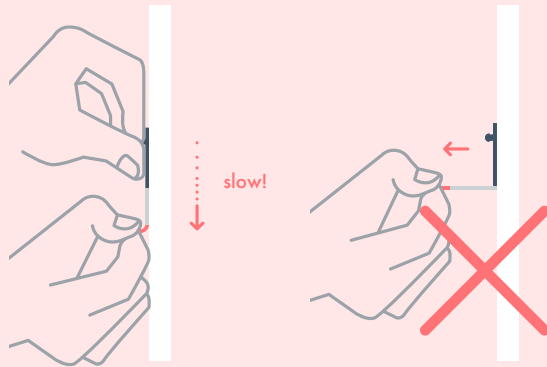
Refill Expand your IXXI





- A** - Click *the first two hatches* of the hanging tool onto the last two Monos of your IXXI.
- Attach the hanging tool to the wall with tape, and make sure it is flat and levelled.
- B** - Slide the long part of half a Mono onto the first available space in the hanging tool.
- Fill the hanging tool with the required number of Monos.
- C** - Fold the hatches up and stick the Powerstrips to the wall.
- Slide the hanging tool off the Monos and attach the new cards.

Need new tools? www.ixxiyourworld.com/tools

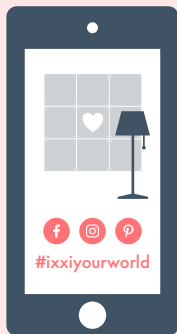
Attention! Remove your IXXI carefully



- A** First remove the IXXI from the Monos.
- B** Under the Monos you see part of the Powerstrip sticking out. Keep the Mono in its place with one hand. With the other hand pull the tab of the Powerstrip slowly in a downward direction, instead of towards you.
 **Never pull the Powerstrip straight towards you!**

 **Tip:** Click the tag with the removal instruction as a reminder onto a Mono (underneath a card)

All done! You've just IXXI'd your world



Hurray, your IXXI is up! Like the result? Share your world with us on Facebook or Instagram with the hashtag #ixxiyourworld. We like! And who knows, we might share your pride and joy on our channels. Enjoy :)

- ✉ P.S. Does your IXXI or the hanging system not entirely meet your expectations? We try our very best and would love to hear your feedback. Contact us at mail@ixxiyourworld.com or through our social channels, and we will be happy to help you. Many thanks.